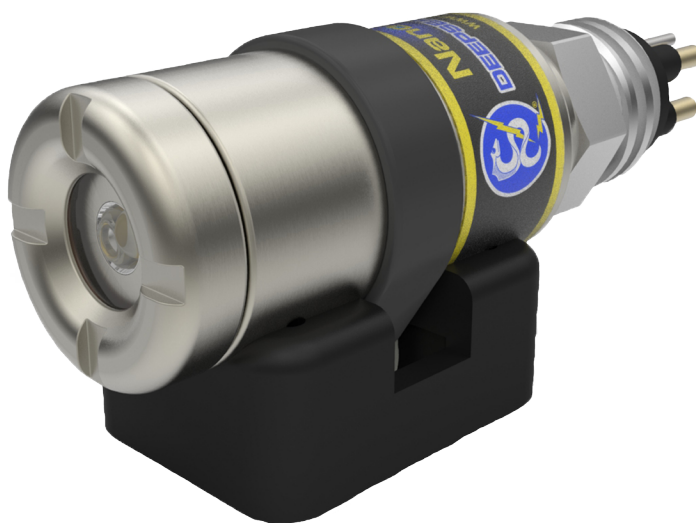


Nano SeaLite[®]

Compact. Durable. Astonishing Light Output for its Size.



FEATURES

Up to 12km Depth Rated

10-36V DC Input Power

Compact and Ultra Lightweight

700 Lumens Typical Light Output

Highly Vibration and Shock Resistant

T: (858) 576-1261
F: (858) 576-0219

4033 Ruffin Road
San Diego, CA
92123- 1817 USA

www.deepsea.com
sales@deepsea.com



Nano SeaLite®

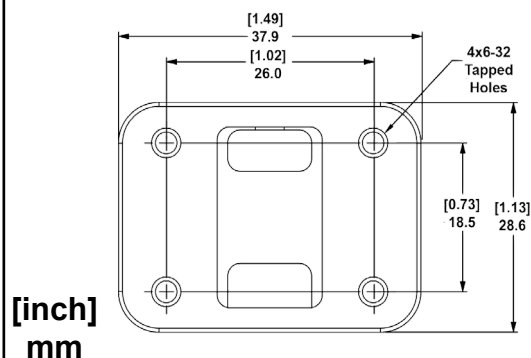
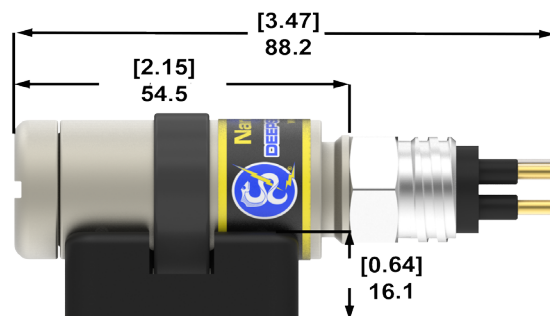
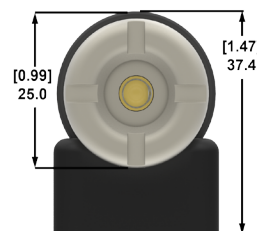
Standard Connector MCBH4MP



- 1 = Negative (-)
- 2 = Positive (+)
- 3 = Not Used
- 4 = Not Used

*Other connectors and pin-out options are available upon request.

Dimensions



[inch]
mm

Mechanical Specifications	
Body Material	6Al-4V Titanium
Window Material	Sapphire
Mounts	High Strength Plastic Mounting Collar (Standard) Helmet Mounting Brackets with Quick Release (Optional)
Weight in Air	113.7 g (4.01 oz)
Weight in Water	54.99 g (1.94 oz)
Implodible Volume	6 cm ³ (0.36 in ³)
Length (w/o Connector)	49.9 mm (1.97 in)
Outer Diameter	25.0 mm (0.98 in)
Environmental Specifications	
Depth Rating	6km (19,685ft) standard 12km (39,370ft) optional
Test Pressure	10,000 psi
Min/Max Operation Temp.	-10° C to 50° C (14° F to 122° F)
Optical Specifications	
Color	Cool White
Lumens in the Water	700 Lumens Typical
Color Temp	Standard: 6500K - 8000K
Beam Pattern (FWHP)	70° Flood
Electrical Specifications	
Input Voltage Range	10-36V DC
Input Current	1.16A @ 12V, 0.38A @ 36V
Input Power	14 W



4033 Ruffin Road
San Diego, CA
92123-1817 USA

www.deepsea.com
sales@deepsea.com



T: (858) 576-1261
F: (858) 576-0219