

SubConn® Power Ethernet Circular

13 contacts

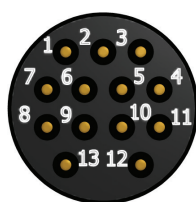
Connector specifications

Voltage rating	600 V AC rms
Voltage rating on data wire	250 V AC rms
DC rating	85% of above AC rating
Current rating on power wire	4 A per contact (max 16 A per connector)
Data rate	1 Gbit/s (up to 75 m)
Insulation resistance	> 200 Mohm
Contact resistance	< 0.01 ohm
Wet matings	> 500
Temperature rating (water)	- 4 to 60°C, 25 to 140°F
Temperature rating (air)	- 40 to 60°C, - 40 to 140°F
Storage temperature rating	- 40 to 60°C, - 40 to 140°F
Depth rating	600 bar, 8,700 psi
Depth rating PEEK	300 bar, 4,350 psi

Material specifications

Connector body	Chloroprene rubber
Bulkhead body	Brass, stainless steel, titanium, anodised aluminium or PEEK
Contacts	Female sockets in gold plated brass UNS - C36000
	Male pins in gold plated beryllium copper
O-rings	Nitrile
Locking sleeves	POM
Snap rings	Stainless steel AISI 302
Inline cable (100 cm, 3.3 ft)	4 pair 24 AWG, 0.20 mm ² PUR
	Power conductors 4 x 18 AWG, 0.82 mm ²
	Screen: Tinned copper braid
Bulkhead leads (100 cm, 3.3 ft)	CAT 5E patch cable, 5 x 20 AWG, 0.52 mm ² with coloured wires
	incl. RJ 45 connector (not installed)

Face view (male)

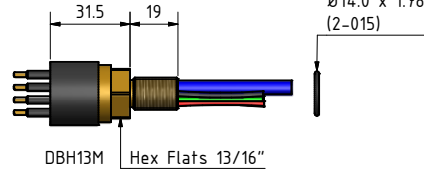
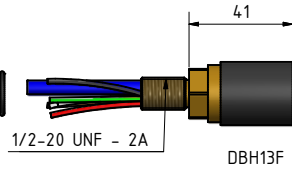
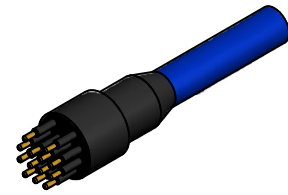
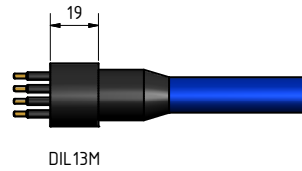
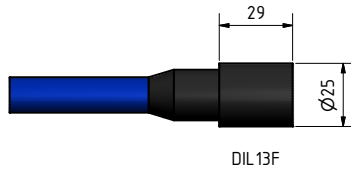


Inline cable colour code

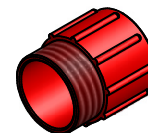
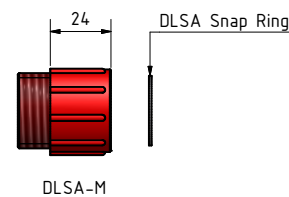
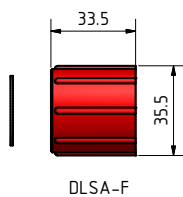
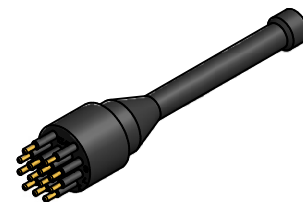
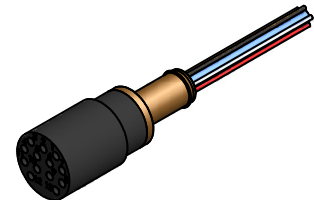
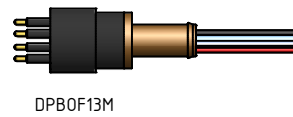
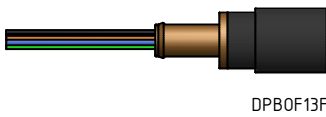
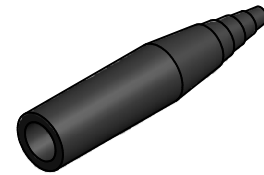
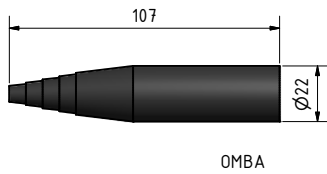
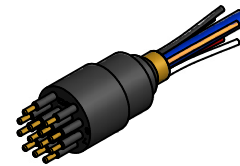
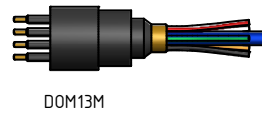
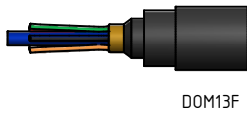
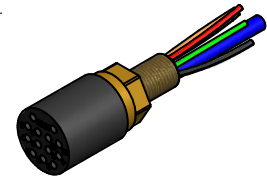
1 Black	*4-5 Brown, Brown/white	*10-11 Green, Green/white
2 Screen (orange wire on bulkhead)	*6-7 Blue, Blue/white	12 Red
3 White	*8-9 Orange, Orange/white	13 Green
* Twisted pairs		

Nominal cable outside diameter (OD)

PUR cable 0.550", 13.97 mm



O-Ring
Ø14.0 x 1.78
(2-015)



Drawing information

Dimensions in mm (1 mm = 0.03937 inch)
Threads in inches (1 inch = 25.4 mm)