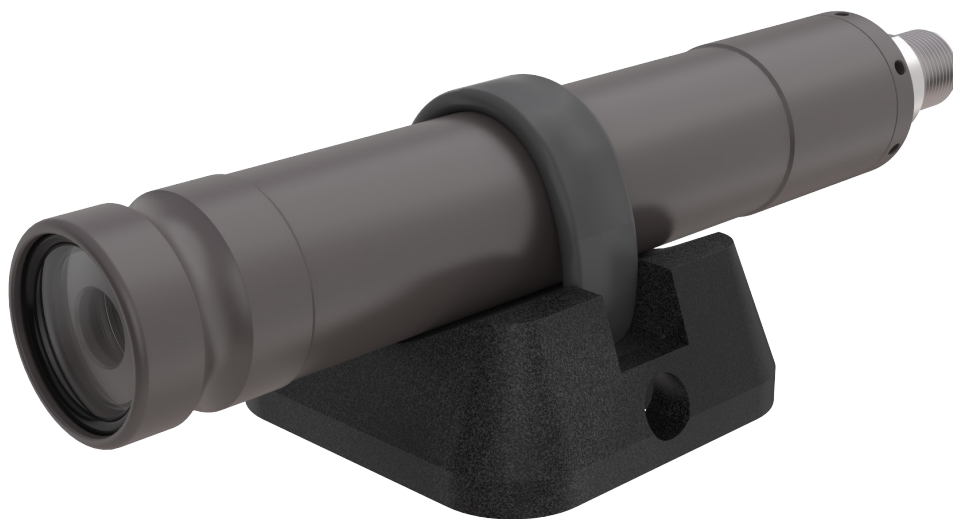


Micro SeaLaser[®]



FEATURES

<5 mW red or green laser, dot or line

Compact titanium housing

6,000 m depth rated

Dual mounting bracket available

Creates and maintains parallel beams

Excellent for scaling and measurement

Accommodates most SeaCam[®] cameras

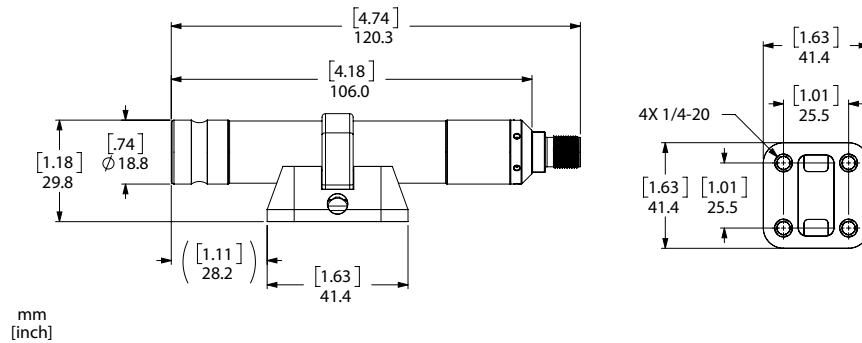
4033 Ruffin Road
San Diego, CA
92123-1817 USA

T: 1-800-ITS-DSPL (487-3775)
858-576-1261
F: 858-576-0219

www.deepsea.com
sales@deepsea.com



Micro SeaLaser®



Micro SeaLaser	
Laser	
Type	Continuous Wave Semi-conductor laser diode Class III-A
Beam Diameter	1.8 mm x 0.5 mm
Wavelength	635 nm
Beam Divergence	0.09 mRadians x 0.19 mRadians
Beam Power	<5mW
Environmental Specifications	
Depth Rating	6,000 m
Electrical Specifications	
Voltage	7~30 VDC
Current	47 mA
Mechanical Specifications	
Housing	Titanium 6AL-4V
Port	Sapphire, anti-reflective coated
Outer Diameter	18.8 mm [0.74 in]
Overall Length	120.3 mm [4.74 in]
Weight in Air	75 g [2 oz]
Weight in Water	40 g [1 oz]
Connector	
Default	Impulse Sub-Miniature Connector IE55 (Titanium), 2-pin
Pinout	1 = Ground 2 = Power
Accessory	
Accessory	Dual Micro SeaLaser Mount