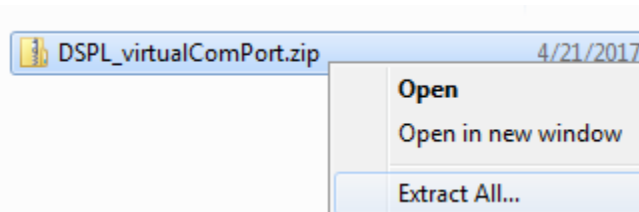


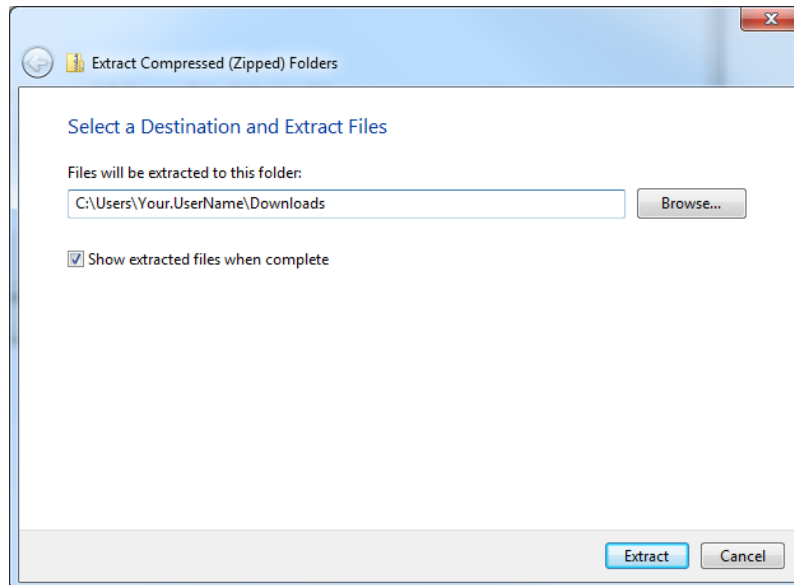
1) Extract the contents of the provided ZIP file to a known location

a. Right click on **DSPL_virtualComPort.zip**



i.

b. Extract the contents of the zip file to a location you can find later (Ex: Downloads)



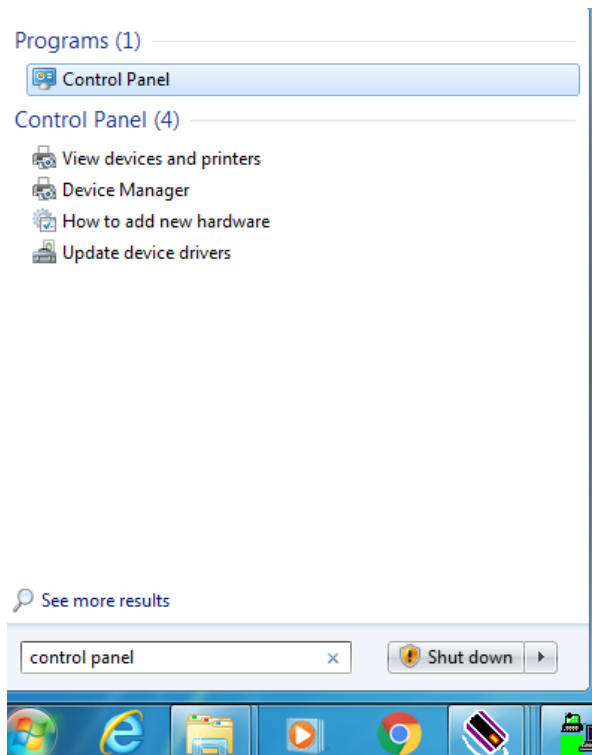
i.

c. Click **Extract**

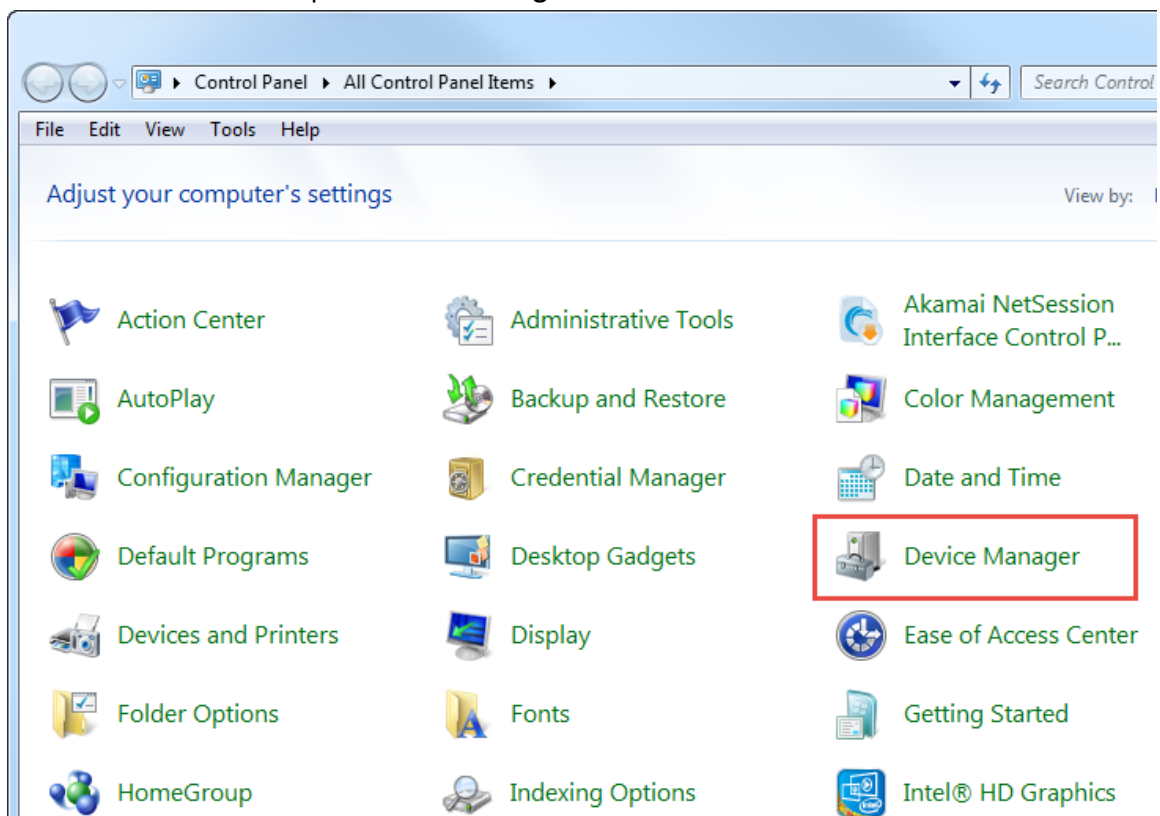
2) Connect your LSL device USB to your computer, using a USB mini-B cable



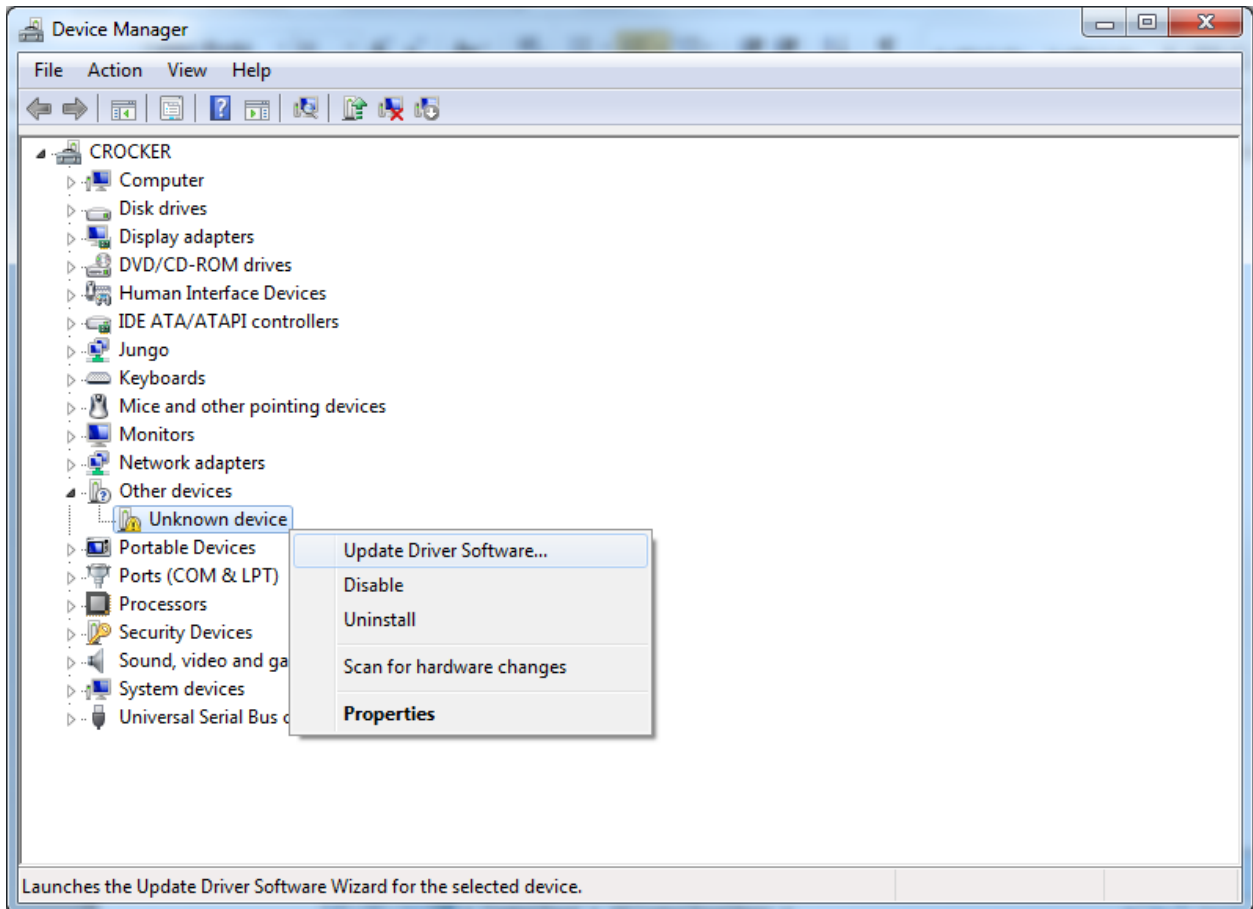
- 3) Open your **start menu** and search for “**Control Panel**”



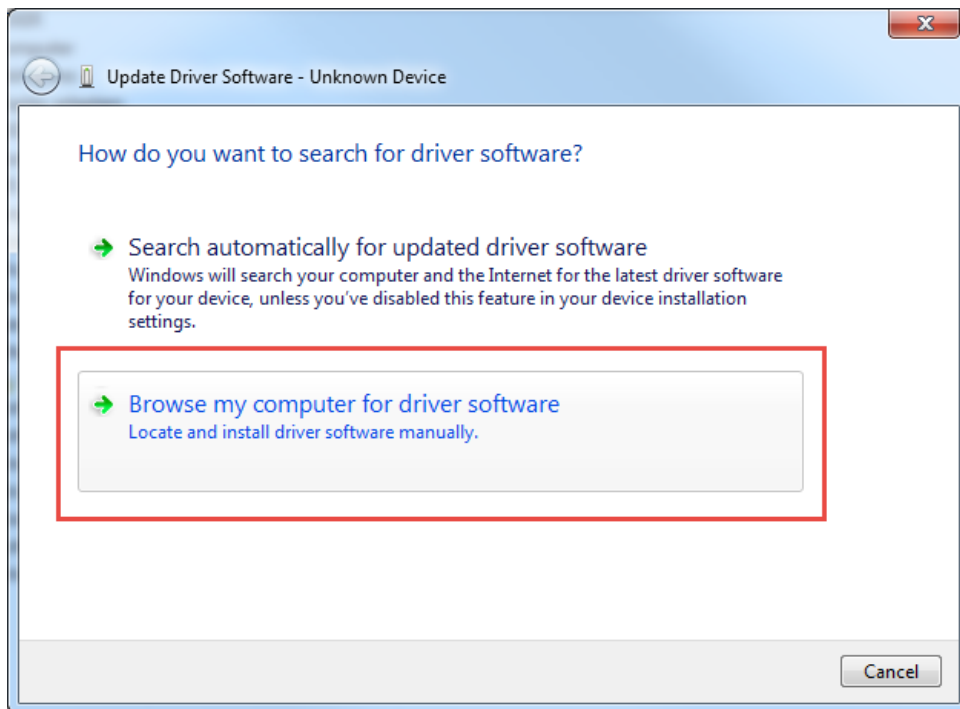
- 4) From the **Control Panel** open “**Device Manager**”



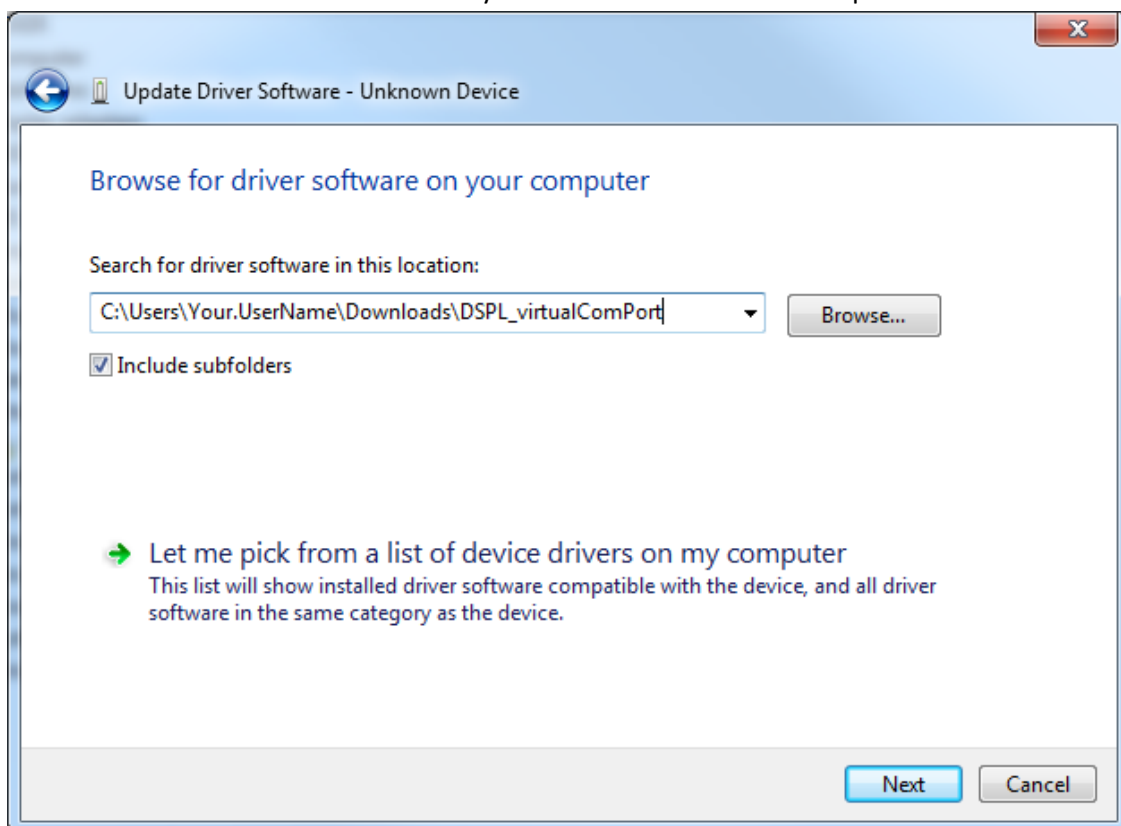
- 5) Inside the **Device Manager** window, locate **Other Devices -> Unknown device**
- 6) Right click on **Unknown device** and click **Update Driver Software...**



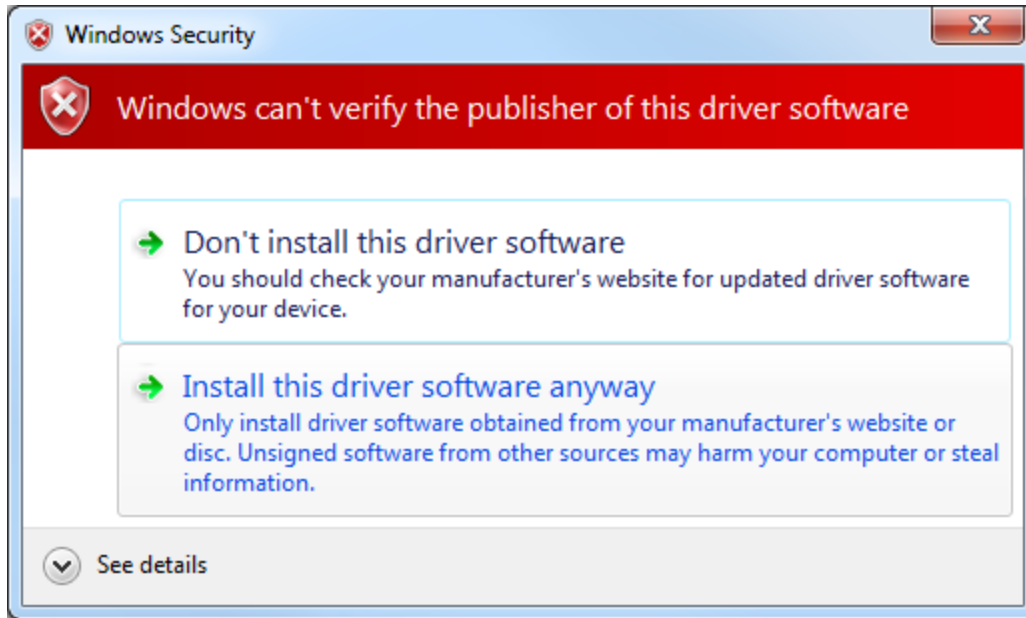
- 7) Click on **"Browse my computer for driver software"**



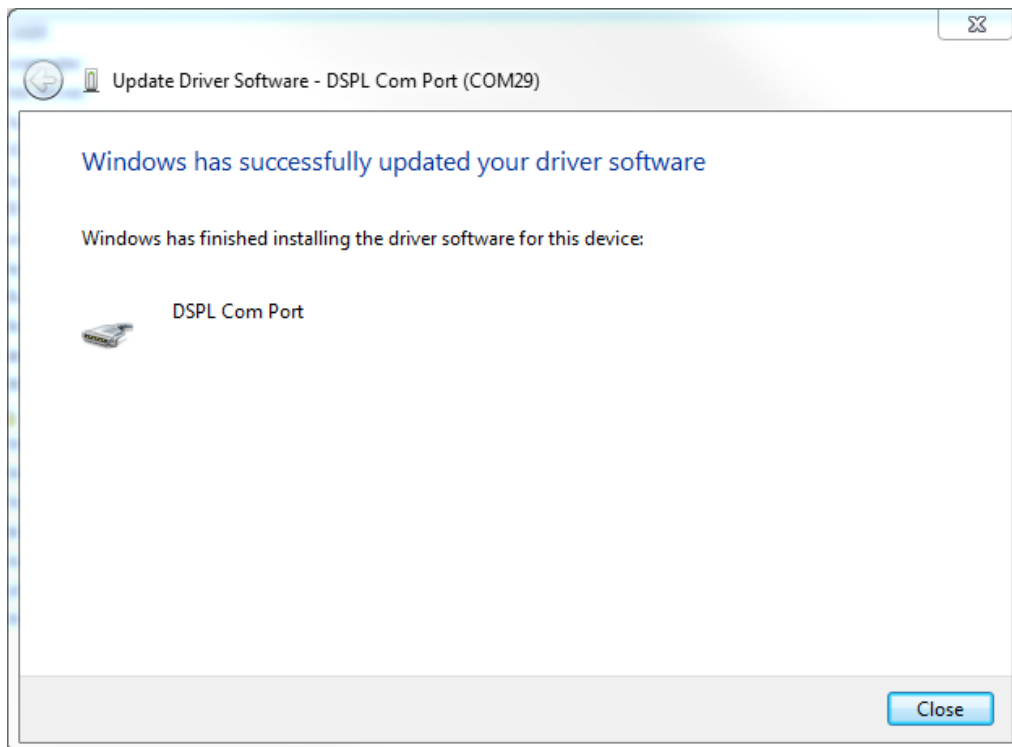
- 8) Click on **Browse...** and locate the folder you extracted from the first step



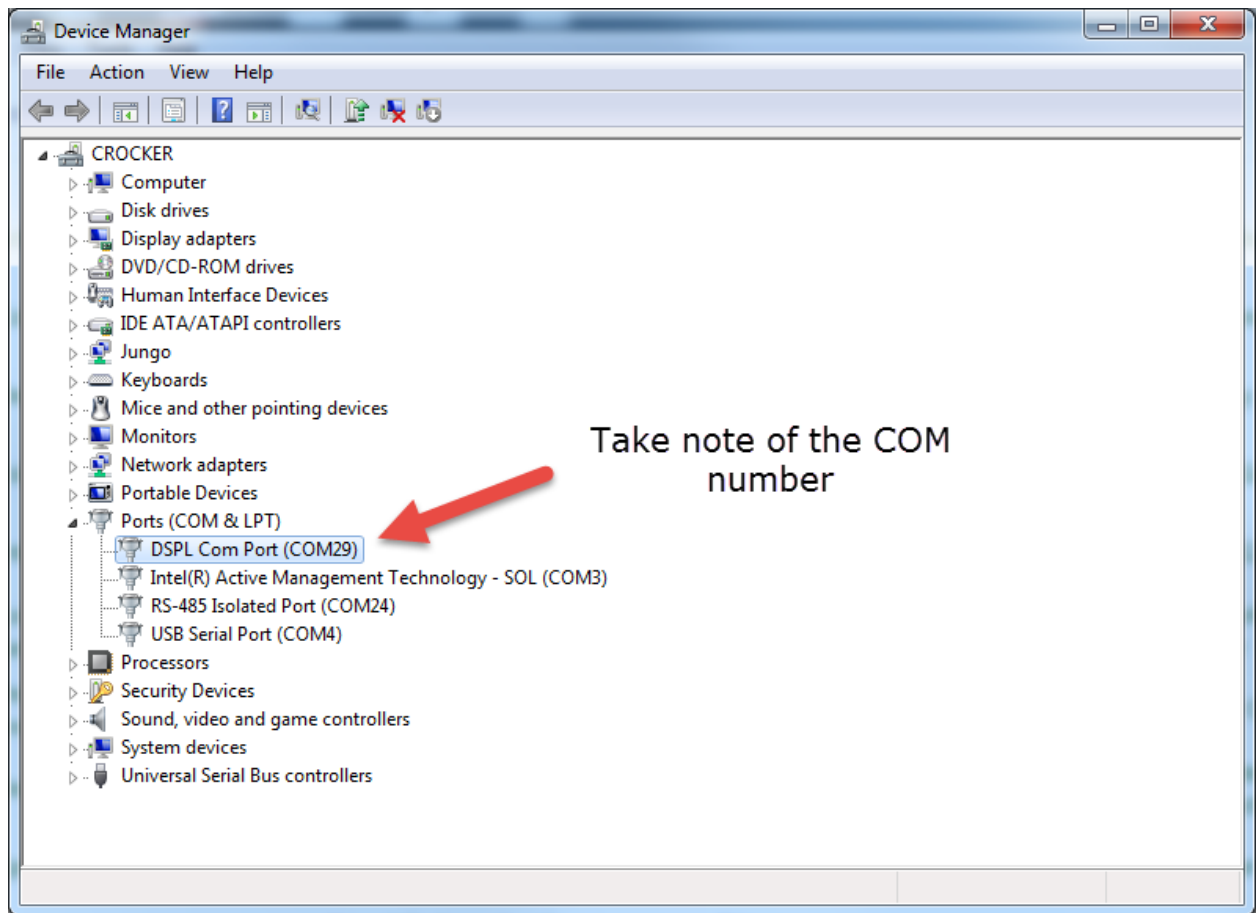
- 9) Click on **"Install this driver software anyway"**



10) You should have the following window



11) Go back to **Device Manager** and confirm that “**DSPL Com Port**” exists



12) Success! You may now communicate with your device over USB using the SeaSense protocol over any serial or terminal program.