

P O R T A B L E & R U G G E D

S U B M E R S I B L E R O B O T S

MADE IN CANADA ♦



2 STRONG AREAS WITH DEEP TREKKER - PRODUCT & AFTER SALES SERVICE. EXCELLENT PRODUCT FOR SHIP HULL SURVEY AND AN EVEN BETTER 24 HR SUPPORT FROM THE SERVICE TEAM (SPECIAL MENTION OF MR. JEFF LOTZ) IN CASE OF ANY TROUBLE!

DEEPAK T. - JOTUN



MAGNETIC
WHEELS



EXTREMELY
DURABLE



BATTERY
OPERATED



FULLY
SUBMERSIBLE



360° TURN
RADIUS



PORTABLE
DESIGN

DT640 // HIGHLIGHTS

ATTACHES TO FERROUS MATERIALS (MIN 3MM)

ABILITY TO WORK IN TURBID WATER

NDT CAPABILITIES

LIGHT HULL CLEANING ATTACHMENTS

DURABLE // ANODIZED ALUMINUM BODY

PORTABLE // NO GENERATOR REQUIRED

HULL INSPECTION SERIES

DT640 UTILITY CRAWLER

ELEVATED AUXILIARY CAMERA

SONAR INTEGRATION

75M TETHER & REEL

PORTABLE CASES

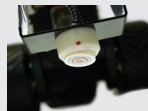
SPLASHPROOF CONTROLLER



MODULAR CUSTOMIZATION // DT640 ADD-ONS



SONAR
INTEGRATION



THICKNESS
GAUGE



PRESSURE
WASHER



DOZER KIT



AUXILIARY CAM
& ARM

PORTABLE & RUGGED

SUBMERSIBLE ROBOTS

MADE IN CANADA ♦



THIS IS AMAZING! INSTEAD OF DRAINING TANKS, WE INSPECT AND VACUUM OUT SEDIMENT WITH THE DT640 UTILITY CRAWLER.

JO HULANDS, THE TANK INSPECTOR



FULLY
SUBMERSIBLE



EXTREMELY
DURABLE



BATTERY
OPERATED



LOW
MAINTENANCE



360° TURN
RADIUS



PORTABLE
DESIGN

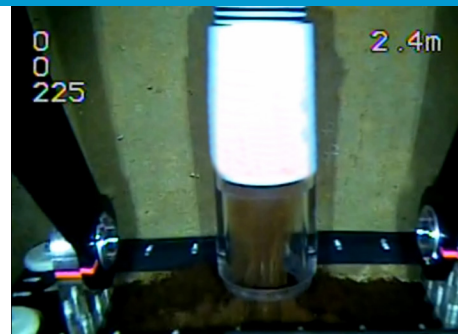


DT640 // HIGHLIGHTS

- CLEAN WATER TANKS WITHOUT DRAINING
- POTABLE WATER SAFE
- EASY TO USE CONTROLS
- DURABLE // ANODIZED ALUMINUM BODY
- PORTABLE // NO GENERATOR REQUIRED
- COST EFFECTIVE

CLEANING PACKAGE

- DT640 UTILITY CRAWLER
- ELEVATED AUXILIARY CAMERA
- VACUUM HEAD
- HYDRAULIC ARM KIT
- 75M TETHER & REEL
- PORTABLE CASES
- SPLASHPROOF CONTROLLER
- HOSE & PUMP NOT INCLUDED



DT640 VAC // QUICK SPECIFICATIONS

WIDTH:	406MM (13")	LIGHTING:	900 LUMENS
HEIGHT:	228MM (9")	CAMERA:	700HD TVL, COLOR, 0.001 LUX (LOW LIGHT)
WEIGHT:	15KG (34 LB)		CONTROLLER CONTROLLED
DEPTH RATING:	50M (164 FT)	WHEEL/DRIVE:	2WD
BODY MATERIAL:	STAINLESS STEEL, ALUMINIUM	WARRANTY:	1 YEAR - PARTS AND LABOR