

# REVOLUTION REMOTELY OPERATED VEHICLE [ROV]

Mission-ready remotely operated vehicle with greater payload capabilities, deeper depths, and advanced stabilization.




 DEEP TREKKER™

# JOIN THE REVOLUTION ROV

The REVOLUTION is the most intuitive and stable ROV for underwater surveys and inspections. Built tough to survive harsh underwater conditions to accomplish complex missions.

 305m (100ft) depth rating

 Up to 6-hour battery operation

 HD camera

 Expeditionary transport case



## Revolving camera head

Change the orientation of your camera, sonar, grabber and more.



## Field swap batteries

Quick-change batteries in the field for extended missions.



## Autonomous capabilities

Seamlessly fusing all sensor data for autonomous control.

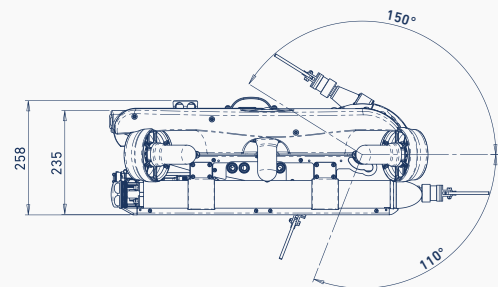
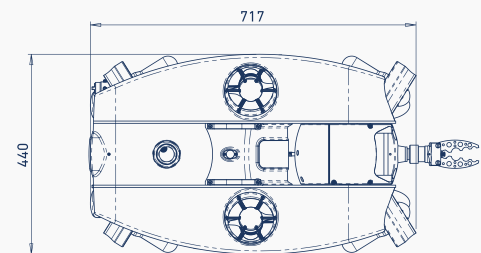
## GENERAL SPECIFICATIONS

### ROV General Specs

Width :	440 MM (17.3")
Height :	235 MM (9.3")
Length :	717 MM (28.2")
Weight (in air) :	26 KG (57 LB)
Body Material :	Anodized Machined Aluminum, Carbon Fiber, Stainless Steel, & Buoyancy Foam
Window Material :	Sapphire & Acrylic
Depth Rating :	305 M (1000 FT)
Operating Temp :	-10°C to 50°C (14°F – 122°F)
Case (optional) :	Custom Pelican Air 1650 Handle and Wheels
Drives/Thruster:	Magnetically Coupled/Sealed
Warranty :	1 Year – Parts and Labor (optional 2-3 yrs)

### ROV Electrical System

System Voltage :	19.2 VDC
Battery Run Time :	3 - 6 Hours (30-sec Battery Change)
Thruster Control :	6x Independent Control Infinitely Variable 100% Reversible





# REVOLUTIONARY REVOLVING CAMERA HEAD

The defining feature is the 260-degree revolving head at the front of the vehicle. In the center of this head is the ultra high definition camera that you see the view from on your controller, as well as powerful LED floodlights and a laser scaler.

Adjust the angle of your camera, lights, laser scaler, imaging sonar and grabber to ensure optimal position for your application, such as sweeping an area with the imaging sonar in a search mission or looking above at the hull of a ship or to locate targets on the seafloor.

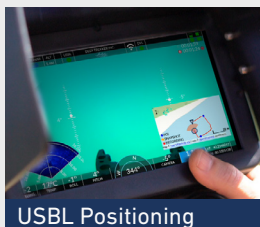
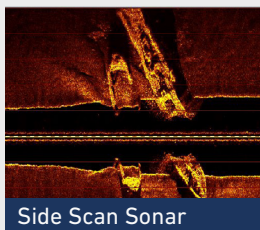
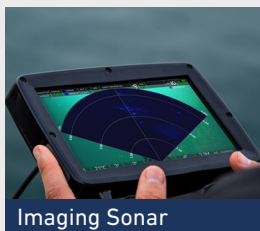
# ADVANCED STABILITY AND AUTONOMOUS CAPABILITIES

The ROV is propelled by six powerful thrusters, two of which are vertically mounted for precise vertical movements and depth holding, four of the thrusters are mounted horizontally and in a vectored configuration to allow for lateral movements.

The REVOLUTION NAV package has advanced autonomous stabilization and position tracking features. Allowing operators the ability to station hold against currents and pilot their vehicle precisely and accurately through varying water conditions.

Post-dive, take your recorded GPX data alongside your video and share them with your customer or team.

# VEHICLE COMPONENTS



# POWERED BY BRIDGE TECHNOLOGY

An intelligent, technology platform from Deep Trekker. An operating system designed with custom hardware and software; for control, integration, communication and enhanced operation.

Enable the ability to fuse all sensor data into one handheld, weatherproof controller. See positional data, direct imaging sonar feed and more - all alongside the ROV live video feed.



Simplified control



Seamless integrations



Constant communication



Enhanced operations

<b>Rotating Camera Head</b>	✓	✓
<b>7" LCD Controller</b>	✓	✓
<b>FULL HD Camera</b>	✓	✓
<b>300M Depth Rating</b>	✓	✓
<b>300M Tether</b>	✓	✓
<b>Tether Reel</b>	✓	✓
<b>Grabber Arm</b>	✓	✓
<b>Laser Scaler</b>	✓	✓
<b>Sensor Pack</b>	✓	✓
<b>Microphone</b>	✓	✓
<b>Lighting</b>	✓	✓
<b>2 Sets of Batteries</b>	✓	✓
<b>2 Carrying Cases</b>	✓	✓
<b>Fully Assembled and Tested</b>	✓	✓
<b>Warranty</b>	One Year	Two Years
<b>Online Training</b>	✓	✓
<b>USBL Positioning</b>	-	✓
<b>DVL</b>	-	✓
<b>Field Service Kit</b>	-	✓

### EXTRA ADD-ONS

Imaging Sonar	NDT Tools	Custom Tether Lengths
Mechanical Sonar	Grabbers and Manipulators	Cases
USBL	Sediment Samplers	Service Kits
DVL	Water Samplers	Operational Enhancements
Side Scan	Additional Cameras	Application Based Tools
Water Quality Sensors	Additional Lighting	

## UNDERWATER REMOTELY OPERATED VEHICLES & ROBOTS

With over a decade of proven performance, Canadian company, Deep Trekker, is one of the largest underwater ROV manufacturers in the world – delivering high quality, robust and portable underwater robots to industries ranging from aquaculture to municipal contracting, military and defense, search and rescue, shipping, infrastructure and more.

### Head office

830 Trillium Dr  
Kitchener, ON  
Canada

DTREV\_ENG\_0121\_04

### Chile Office

Ruta 5 Sur KM 1025 Bodega 5  
(Megacentro1)  
Puerto Montt, Los Lagos, Chile



[deeptrekker.com](http://deeptrekker.com)  
[sales@deeptrekker.com](mailto:sales@deeptrekker.com)