

SubConn® Circular Splitconn

2 contacts

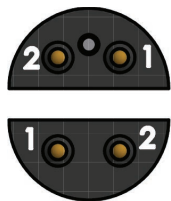
Connector specifications

Voltage rating	600 V DC/AC rms
2 contacts current rating	10 A per contact (max 20 A per connector)
Insulation resistance	> 200 Mohm
Contact resistance	< 0.01 ohm
Wet matings	> 500
Temperature rating (water)	- 4 to 60°C, 25 to 140°F
Temperature rating (air)	- 40 to 60°C, - 40 to 140°F
Storage temperature rating	- 40 to 60°C, - 40 to 140°F
Design depth rating	1,400 bar, 20,000 psi
Qualified pressure tested	800 bar, 11,600 psi

Material specifications

Connector body	Chloroprene rubber
Contacts	Gold plated brass UNS - C36000
Location pin	Stainless steel AISI 303
Locking sleeves	POM
Snap rings	Stainless steel AISI 302
2 conductor inline cable (60 cm, 2 ft)	18 AWG 0.82 mm ² chloroprene rubber

Face view (male)



Inline cable colour code

- 1 Black
- 2 White

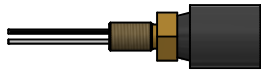
Nominal cable outside diameter (OD)

2 conductor cable 0.276", 7 mm



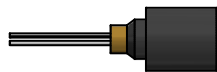
For more information
see page 12/13

IL4F



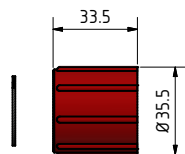
For more information
see page 12/13

BH4F



For more information
see page 12/13

OM4F



DLSA-F



ILS2M-1



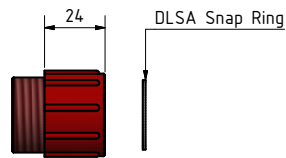
ILS2M



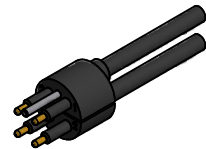
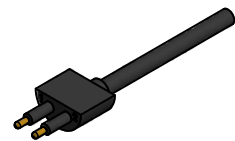
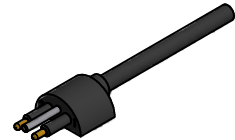
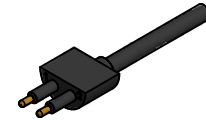
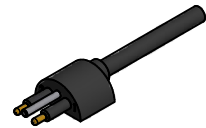
DCS2M-1



DCS2M



DLSA-M



Drawing information

Dimensions in mm (1 mm = 0.03937 inch)
Threads in inches (1 inch = 25.4 mm)